

PRO LINE 21™ FOR KING AIR®

Taking your Pro Line 21 King Air into NextGen® airspace.



**Rockwell
Collins**

Building trust every day

Pro Line 21 King Air upgrade options

SVS
package 1

SVS
package 2

SVS
package 3

Comment

| | | | | | |
|-------------------------|---|---|---|---|---|
| Display Update | The AFD 3010 update will enable the list of features here, plus enable the installation of synthetic vision | | | | |
| (AFD 3010E) | Wall-to-wall ADI | X | X | X | |
| | Flight Path Vector | X | X | X | |
| | Integrated ADS-B annunciation | X | X | X | |
| | Enhanced engine indication support | X | X | X | Enables better integration of Black Hawk and Raisbeck modifications |
| | APV (Europe) | X | X | X | Complies with TAWS Mode 5 monitoring requirements |
| Synthetic Vision | SVS on PFD | X | X | X | |
| | Optional runway database | O | O | O | Requires subscription to database |
| FMS 4.2 | Supports FMS runway depiction | X | X | X | |
| | LPV (EASA APV) | X | X | X | |
| | RF legs (curved approach) | X | X | X | |
| | Extended navigation beyond N73 and S60 | O | O | O | May require IRS or Super AHRS |
| | Search and rescue (SAR) | O | O | O | |
| ADS-B (V2) | Transponder update | X | X | X | V2 is also known as DO 260B |
| WAAS GPS | Enables ADS-B and LPV/APV | X | X | | |
| IFIS Version 6 | Electronic charts | X | O | | |
| | Enhanced maps | X | O | | |
| | XM WX Satellite Weather® | X | O | | Requires additional hardware |
| | ARINC graphical weather | X | O | | Requires the purchase of the data link option |

X = included in bundle

O = optional

**Talk to your dealer about purchasing stand-alone options*

Additional products available for King Air

| | |
|----------------------|--|
| IMS 3500 | MFD video option (Enhanced Vision System) |
| VHF data link | Corporate Aircraft Service Program (CASP SM) |
| Second FMS/GPS | Airshow® 500 |
| High frequency radio | |

Take your investment beyond the mandates

Pro Line 21™ displays bring much more than synthetic vision. Featuring integrated ADS-B Out annunciations and enabling SBAS approaches in Europe.

Synthetic vision – the new standard

Fly with increased confidence at night, or in any weather

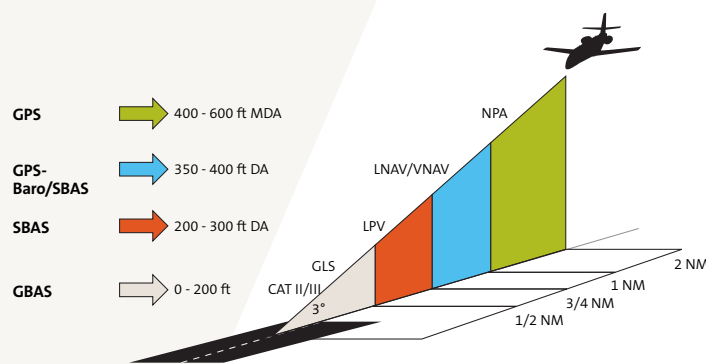
- Always know where you are relative to nearby terrain
- Stay oriented with your landing runway, simply and visually
- See where your airplane is going with Flight Path Vector



Flight Management System

Taking advantage of the latest routes and terminal procedures requires the latest in FMS technology

- Saves time and money by enabling LPV approaches
- Uses GPS as primary means of navigation
- Adds X, Y, Z approaches
- Automatically shares takeoff and arrival data with IFIS and SVS



- More precision approaches available at more airports
- More than 4,000 LPV approaches available in the United States and continues to grow

Without SBAS, you are restricted to the NPA approach minimums.

ADS-B Out (mandate January 2020)

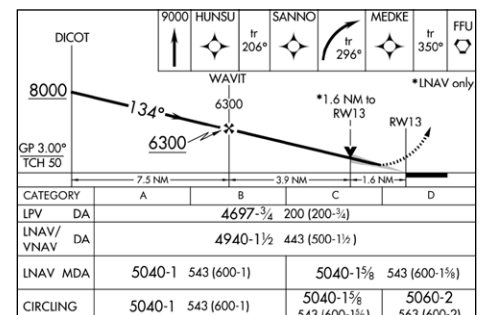
Complies with the latest standards for worldwide acceptance

NextGen is transitioning from ground-based to space-based tracking, enabling more aircraft to fly more efficient routes with closer spacing.

WAAS capable GPS

Unlock NextGen airspace with a WAAS update

WAAS is the technology that enables precision RNAV GPS approaches, LPV and the ADS-B Out mandate. Now is the time to update.



DME/DME RNP-0.3 NA.

| | | |
|---|-----------------|---|
| PROVO, UTAH | AL-683 (FAA) | 15176 |
| WAAS CH 97307 W13A | APP CRS 134° | Rwy ldg 8599 TDZE 4497 Apl Elev 4497 |
| RNAV (GPS) RWY 13 PROVO MUNI (PVU) | | |
| <p>For uncompensated Baro-VNAV systems, LNAV/VNAV NA below -23°C (-9°F) or above 40°C (104°F). DME/DME RNP-0.3 NA. Circling NA east of Rwy 18 and 31.</p> | | |
| <p>MISSED APPROACH: Climb to 9000 direct HUNSU and on track 206° to SANINO and right turn on track 296° to MEDKE and on track 350° to FFU VORTAC and hold.</p> | | |

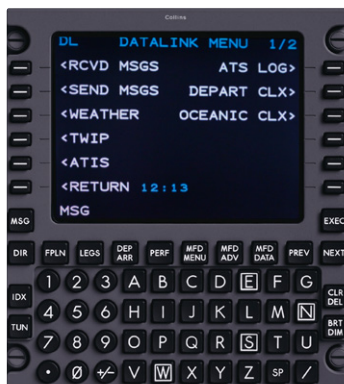
Aircraft Information Manager (AIM)

Never worry about finding a USB stick – have your databases delivered directly to the aircraft

The day of databases being out of date, or of trying to remember where you left the USB stick you used for database updates, is gone. With the IMS 3500 and AIM, Rockwell Collins will deliver the database directly to the aircraft, send you a text message when the database is ready and, with a couple of keystrokes, transfer it to the FMS or IFIS as required.

Data link (VHF)

Sends your FAA filed flight plan directly to the aircraft



Second FMS/GPS

For those mission-critical situations where backup is important

High-frequency (HF) radio

Rockwell Collins is the industry leader in HF radios

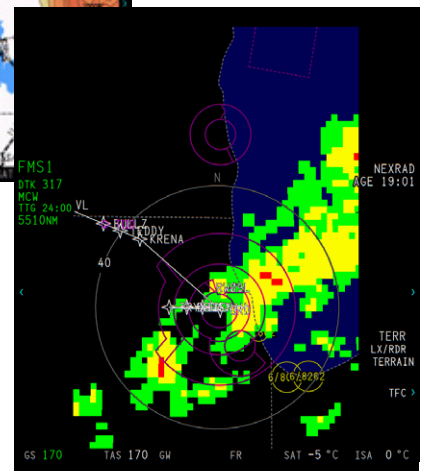
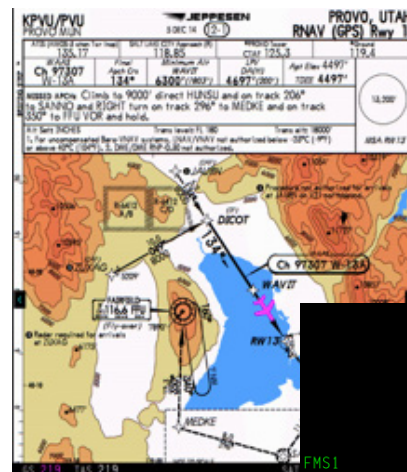
IFIS features

- › Ownship on chart
- › SIDS, STARs, approach, airport charts
- › XM WX Satellite Weather®
- › Enhanced maps with airways and intersections
- › Geopolitical boundaries
- › Chart link

Graphical weather



Lightning. SIGMETS. METARS.



Your total solution



Make the most of your avionics upgrade and enhance your operations by including Rockwell Collins' ARINCDirect™ flight support services.

- › Comprehensive flight planning
- › email
- › Flight plan upload
- › Flexible ARINCDirect Flight Operations System (FOS®)



Learn how our personalized flight support can make managing your operations easier, start to finish.

www.rockwellcollins.com/arincdirect



Cabin solutions

Make every flight more enjoyable with cabin options such as our Airshow® moving maps. Follow your flight in real time. Explore your destination or other global points of interest. Go mobile with the Airshow app for iPad® and Android™ tablets.

CASPSM and services

Our Corporate Aircraft Service Program (CASPSM) Essential is a cost-effective choice for services that keep you on wing while enhancing your aircraft's resale value. Designed for aircraft with lower annual flight hours, CASP Essential provides aircraft availability and budget predictability.

Building trust every day.

Rockwell Collins delivers innovative aviation and high-integrity solutions to commercial and government customers worldwide. Backed by a global network of service and support, we stand committed to putting technology and practical innovation to work for you whenever and wherever you need us. In this way, working together, we build trust. Every day.

For more information, contact:

Rockwell Collins
400 Collins Road NE
Cedar Rapids, Iowa 52498
+1.319.295.4085
email: csmarketing@rockwellcollins.com
www.rockwellcollins.com